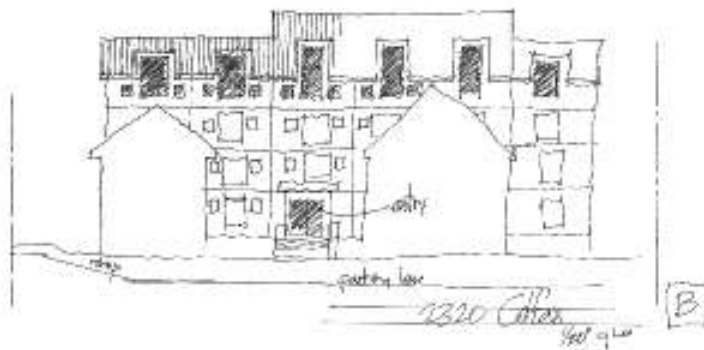


**ALTERNATIVE IDEA**  
**FOR**  
**2320 COLFAX AVENUE SOUTH - Draft**  
**MINNEAPOLIS, MN**

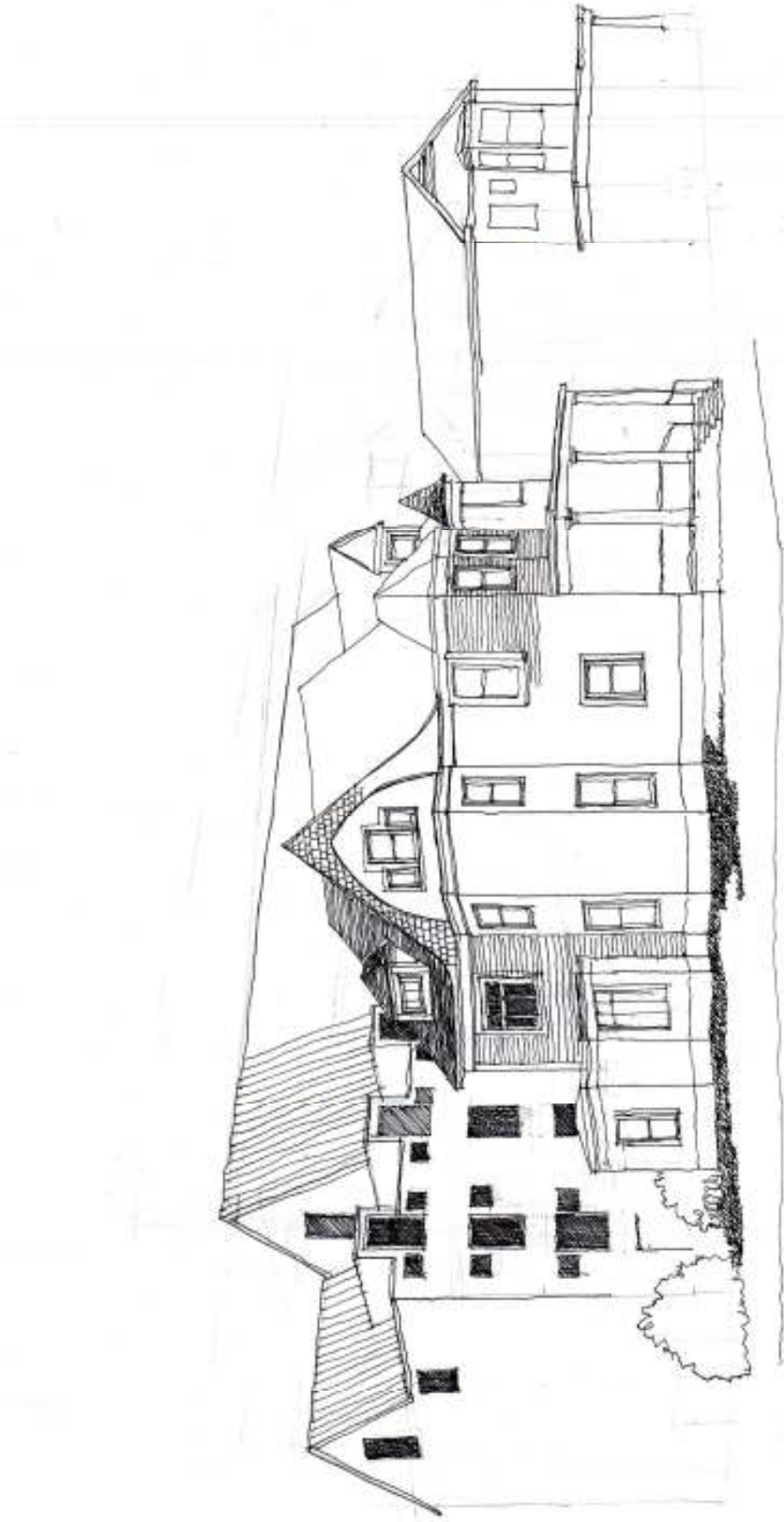
Presented by The Healy Project

Utilizing existing historic homes for triplex unit and adding urban housing that is sensitive to the urban fabric and architectural language. Compare to proposed new development, this idea preserve street appearance and achieve 72% of proposed units. The Healy Project believe that utilizing historic homes in this location will contribute for economic and cultural aspect of development in LHEN (Lowry Hill East Neighborhood).

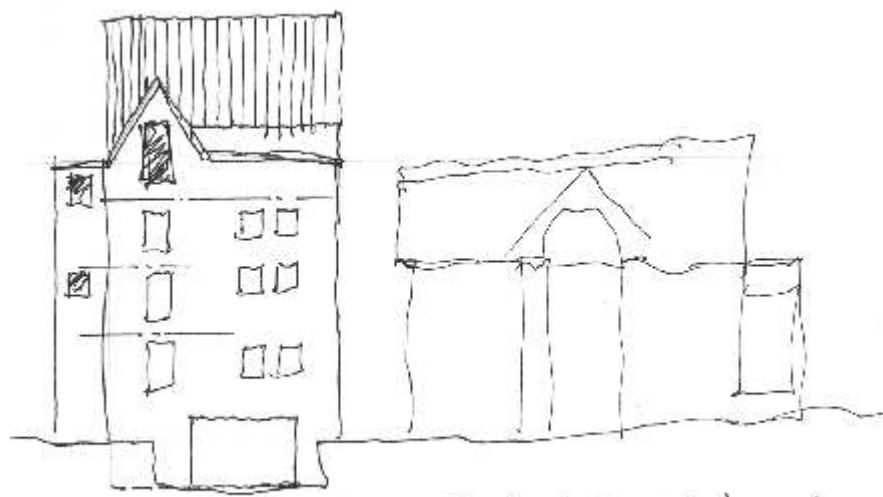
Unit Style	EA
1 bedroom	18
2 bedroom loft	6
2 bedroom +	8
<b>Total</b>	<b>32</b>
Parking	
Basement	24
Off Street	6
<b>Total</b>	<b>30</b>



EAST ELEVATION

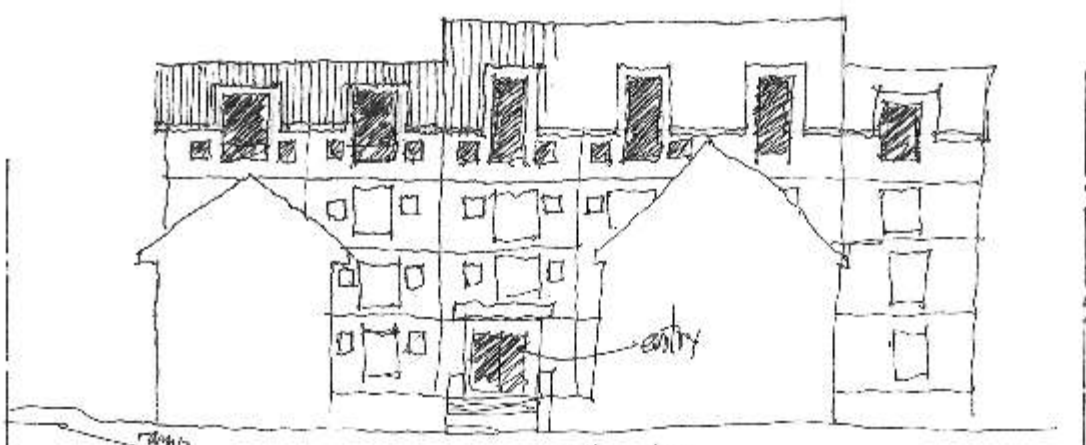


**VIEW FROM W 24<sup>TH</sup> AND COLFAX AVE.S CORNER**



South Elevation Option A

**SOUTH ELEVATION**



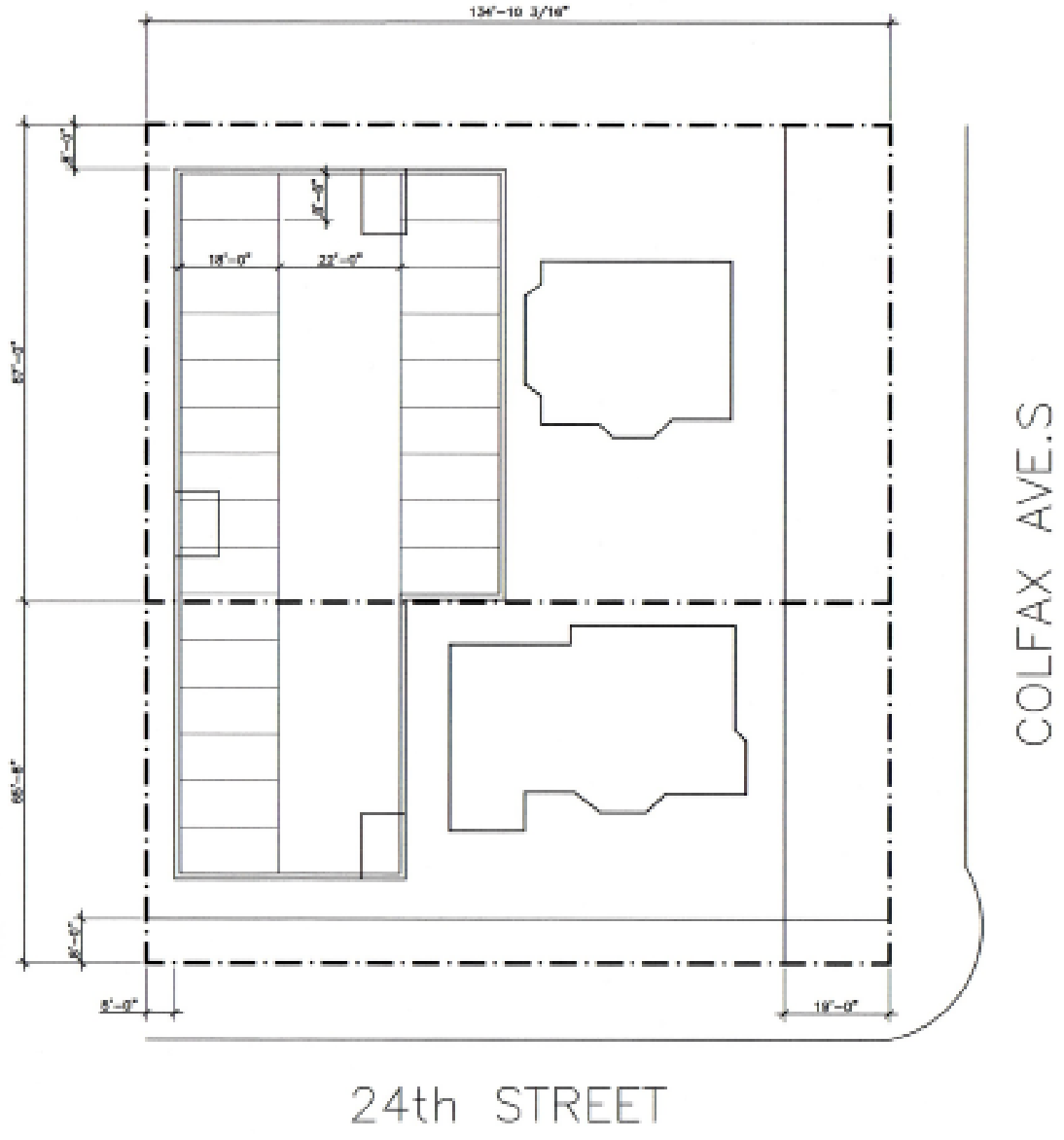
entry  
parking lot  
1320 Colfax  
1/20" = 1' = 0"

B

**EAST ELEVATION**



NORTH



**BASEMENT PLAN**

Scale: 1"=250'-0"